



## TECHNICAL DEVICES COMPANY

A SUBSIDIARY OF WINTHER TECHNOLOGIES, INC. TEL: 310- 618-8437 \* FAX: 310- 618-1543 \* www.TechnicalDev.com

560 Alaska Avenue \* Torrance \* California 90503 \* U.S.A.

### Technical Devices Company *NU/ERA 18 CV Wave Soldering Machine* *Technical Specifications & Pricing*



**18-Inch Process Width**  
**Computer Controlled Wave Soldering Machine**  
(actual machine may vary from picture above)

#### **STANDARD FEATURES in order of MODULE CONFIGURATION**

##### **FLUXER MODULE**

- Spray Fluxer
- Constant Pressure and Flow
- Reciprocating Spray Head
- Easy maintenance



*Consistent Pressure and  
flow.  
Rapid flux change over.*

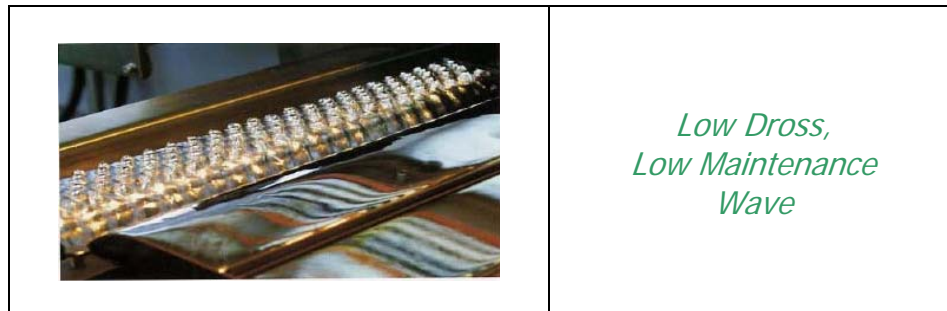
### PREHEATER MODULE

- 2 each 3 foot long Zones
- Forced Air Convection
- Topside Tunnel for Uniform Temperature



### SOLDER MODULE

- Lead Free Process Ready Solder Pot
- Titanium *"Dancer"* and Laminar Wave Nozzles
- P.I.D. Temperature Control
- Low Dross Formation
- 850 lb. Solder Capacity



## CONVEYOR MODULE

- Full 18" Process Width
- Adjustable Width from 2" to 18"
- Variable Speed 0-1.8 Meters Per Minute
- Standard "V" Shaped Titanium Fingers
- Special Finger Configurations Available as an Option
- Conveyor Width Controlled by Computer
- Adjustable Conveyor Angle 4-7 degrees
- Post Wave PCB Cooling System (Top & bottom)



*Cooling Fan  
(Standard)*



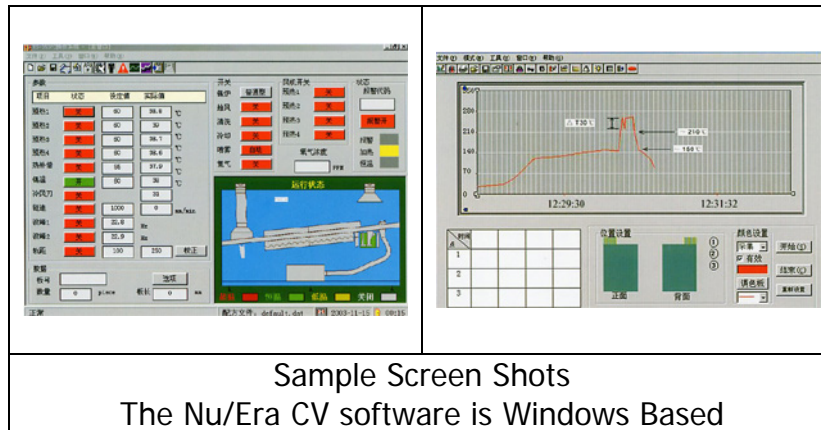
*Chiller  
Water Cooling System  
(Optional)*

## CABINET and STRUCTURE

- Rear Access Service Doors
- Interior Lighting
- Integral Hood Exhaust Ducting
- Front Access Process Windows
- Machine built to Rigid Technical Devices Company Specifications

## SYSTEM HOST COMPUTER CONTROL

- PC & PLC (Siemens) Control System
- Monitor, Keyboard and Swivel Base Assembly located at the entrance end of the machine for operator convenience
- Windows XP based Platform
- Uninterrupted Power Supply



## UTILITIES:

Dimensions: 183" L x 57" W x 58" H  
Plant Power: 480VAC, 3-Phase, 60Hz, 65 Amp  
Plant Compressed Air: .5 MPa.  
Solder Pot Capacity: 850 lbs.



**WARRANTY:**

Technical Devices Company warrants all component parts or subsystems for a period of **one year** from date of purchase against all defects in material and workmanship and will replace or repair any part found to be defective during the warranty period.

**START-UP and TRAINING:**

1-2 days is provided by a factory-trained technician for \$ 1,950.00 (within North America).

**Please note:** An advance notice of 2 weeks is required by the Technical Devices' Service Department for installations. Any shorter notice may require the customer to pay for additional airfare costs.

**SERVICE:**

Normal service is provided from our factory in Torrance, CA.

**PRICING:**

Our prices are firm for 30 days, F.O.B. factory, Torrance, California.

**SHIPMENT:**

Shipment can be accomplished within **3 days** on instock machines, **8-10 weeks** after receipt of purchase order and down payment for non-stock machines.

Padded, air-ride van is required. Shipments are freight collect.

**TERMS:**

40% down payment with the purchase order, 40% Prior to shipment, balance net 30 days after shipment upon approval of credit.

Buyer may cancel Firm Orders for goods only in accordance with the outlined charge schedule:

20% -- Order Received and Production has begun

30% -- 30 days after Order Received

40% -- Machine Complete and Ready to Ship

No cancellations accepted once machine has shipped.

**Transportation:**

FOB Plant (Torrance, CA); shipped air-ride van, collect.

Rev. 01 2011