



Nu/Clean 324 XL Touch Screen
Inline Aqueous Cleaner
Technical Specifications & Pricing



Since 1952, Technical Devices has been supplying the electronics industry with the highest quality production equipment, and has an enviable reputation for after-market service and product support. In addition Technical Devices continues to be on the cutting edge of cleaning technology with innovative products and features that produce excellent, reliable cleaning results while making a minimal impact on the environment. The Nu/CLEAN line of Aqueous cleaners are the safest, quietest, and most energy efficient machines on the market today. Technical Devices is also the first company to offer a Hybrid option for all of its cleaners. The Hybrid Nu/CLEAN reduces your energy costs significantly by using natural gas instead of electricity to heat the water in the cleaner.

Even with all of these technological and environmental advances, the Nu/CLEAN aqueous cleaners are easy to operate and maintain. The touch screen control system is intuitive and straightforward while being robust enough to control and monitor all critical functions of the cleaner. The alarms and maintenance screens let the operator know immediately what actions need to be taken. The physical design of the tanks, cabinets, and controls make regular maintenance quick and easy.

With decades of cleaning experience and an established network of customer service personnel, Technical Devices Company is the best choice to meet your cleaning needs.



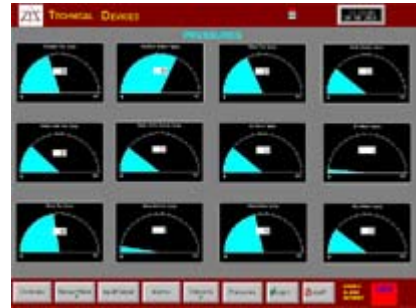
TOUCH SCREEN CONTROL SYSTEM



Main Screen



Input / Output Screen



Pressures Screen

- Robust, Windows based platform
- Password controlled access to programming screens
- Easy operator interface
- Alarm Package included in software
- Touch screen displays and sounds alarms when machine controls are out of tolerance
- Light Tower
- Auto Start / Stop with photo sensor at entrance
- 12" LCD Touchscreen

STANDARD FEATURES in order of MODULE CONFIGURATION

LOAD

- Emergency Stop Button
- Personnel Grounding Socket
- 6" or 12" Fixed Entrance Extension (Specify at time of order placement)

PREWASH STAGE (12" length)

- One Spray Module with four Quick Disconnect Spray Bars (48 nozzles) *[See Figure 1]*
- Isolated Prewash with outside water supply controlled and monitored by valve and flow meter with direct flow to drain

OR

- Prewash with water supplied from wash module pump having common drain with wash module resulting in 48" recirculated wash stage
- Independent spray pressure control for upper and lower spray bars
- Rear pressure gauges next to spray control valves for upper and lower spray bars
- Easy access catch screen *[See Figure 2]*
- Transparent interior slide panel lid and exterior access tempered glass window for in process inspection
- Removable access ports for tank cleaning
- Upper and Lower Dragout Air Knives after Spray Bars



WASH STAGE (36" length)

- ❑ 3 Incoloy 10 kW Immersion Heaters mounted on accessible front bulkhead *[See Fig.2]*
- ❑ Over Temperature Protection
- ❑ Redundant low liquid level protection
- ❑ Automatic Fill with Level Control
- ❑ Auto Chemistry System (*optional*) includes metering pump controlled by flow sensor, which delivers balanced chemistry to the wash section
- ❑ 3 Spray Modules totaling 12 Quick Disconnect Spray Bars (144 nozzles) *[See Figure 1]*
- ❑ Independent Gate Valves Spray Pressure Control for upper and lower spray bars
- ❑ Rear pressure gauges next to spray control valves for upper and lower spray bars
- ❑ High Performance 7.5 H.P. Centrifugal Stainless Steel Pump
- ❑ Stainless Steel High Pressure Plumbing
- ❑ Removable Low Loss Pump Intake Screen Strainer (60 Mesh - .01")
- ❑ Easy Access Catch Screen *[See Figure 2]*
- ❑ Removable Access Ports for Tank cleaning
- ❑ Transparent interior slide panel lid and exterior access tempered glass window for in-process inspection
- ❑ Independent Tank Drain Valve

Figure 1



**Quick Disconnect
Spray Bars**

Figure 2



**Easily Accessible
Immersion Heaters
and Catch Screens**
*(Shown with Front Panel
Removed)*



ISOLATION RINSE STAGE (33" Length)

- ❑ Prevents chemical drag out from wash to rinse tank
- ❑ Increases liquid penetration under components
- ❑ One each upper and lower Air Knife Tubes with adjustable rotation
- ❑ 2 Quick Disconnect Spray Bars totaling 24 nozzles [*See Figure 1*]
- ❑ Outside water supply controlled and monitored by valve and flow meter with direct flow to drain

OR

- ❑ Water supplied from rinse pump controlled and monitored by valve and flow meter with direct flow to drain
- ❑ One Upper and One Lower Dragout Air Knife Tube with adjustable rotation (post isolation rinse)
- ❑ Transparent interior slide panel lid and exterior access tempered glass window for in-process inspection

RECIRCULATING RINSE STAGE (16" Length)

- ❑ 3 Incoloy 10 kW Immersion Heaters mounted on accessible front bulkhead [*See Fig.2*]
- ❑ Over temperature Protection
- ❑ Redundant low liquid level protection
- ❑ Automatic Fill with Level Control
- ❑ 1 Spray Module totaling 4 Quick Disconnect Spray Bars (48 nozzles) [*See Figure 1*]
- ❑ Independent Gate Valve Spray Pressure Controls for upper and lower spray bars
- ❑ Rear pressure gauges next to spray control valves for upper and lower spray bars
- ❑ High Performance 7.5 H.P. Centrifugal Stainless Steel Pump
- ❑ Stainless Steel High Pressure Plumbing
- ❑ Removable Low Loss Pump Intake Screen Strainer (60 Mesh - .01")
- ❑ Easy Access Catch Screen [*See Figure 2*]
- ❑ Removable Access Ports for Tank Cleaning
- ❑ Transparent Interior slide panel lid and exterior access tempered glass window for in process inspection
- ❑ Independent Tank Drain Valve
- ❑ Direct to drain or cascade

FINAL RINSE STAGE (11" Length)

- ❑ 1 Spray Module with 2 Quick Disconnect Spray Bars (20 nozzles) [*See Figure 1*]
- ❑ Water pressure determined by incoming water supply
- ❑ Nozzle Spray is controlled and monitored by valve and flow meter
- ❑ Removable Access Ports for Tank Cleaning
- ❑ Transparent Interior slide panel lid and exterior access tempered glass window for in-process inspection
- ❑ Easy access catch screen [*See Figure 2*]
- ❑ Drag Out Air Knife Removes and Flushes Rinse Water



DRYER STAGE (41" Length)

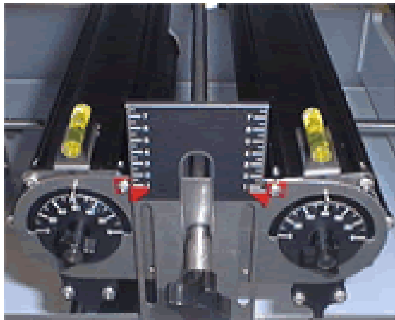
- ❑ 2 Air Knife Modules each with 2 Upper and 1 Lower Air Knives
 - ❑ 1 each High Performance 15 HP Turbine Air Blower with Self Tensioning Belt
 - ❑ 1 each High Performance 10 HP Turbine Air Blower with Self Tensioning Belt
 - ❑ Magnehelic Pressure Gauge for each blower
 - ❑ Slide out Blowers for easier access *[See Figure 3]*
 - ❑ Exterior Tempered Glass Window for In-process Inspection
 - ❑ Insulated Blower and Air Knife compartments for lower decibel operation
 - ❑ Custom Designed Stripping Air Knives for High Efficiency drying
- [See Figure 4]*
- ❑ Height & Angle Adjustable Upper Air Knives
 - ❑ Angle Adjustable Lower Air Knives
 - ❑ Double Paned Glass Viewing Windows for Noise Reduction
 - ❑ Reusable polypro Air Knife Filters
 - ❑ Dryer Section utilizes non-recirculating air to reduce humidity in drying chamber

Figure 3



**Our Roll Out Blowers
make changing filters and
other maintenance
procedures much faster
and easier**

Figure 4



**High efficiency, height
and angle adjustable
Air Knives
for optimum drying**

UNLOAD

- ❑ Emergency Stop Button
- ❑ Insulated Silencing Shroud
- ❑ Personnel Grounding Strap Socket
- ❑ Stainless Steel Exit Ramp
- ❑ Fixed 6" or 12" Exit Extension (Specify at time of order placement)



CONVEYOR

- ❑ Full 24" Process Width
- ❑ Conveyor rail cutouts at spray bar and airknife locations
- ❑ Stainless Steel (302), .5 pitch/ .072-inch diameter wire belt (standard)
- ❑ Upper Stainless Steel (302), .375 pitch/ .072-inch diameter wire belt (optional)
- ❑ Drive protected by Slip Clutch
- ❑ Conveyor is grounded for ESD Protection
- ❑ Return Conveyor Belt routed outside of rinse and wash modules
- ❑ Uni-Drive Top & Bottom Belts (Single Drive Motor)
- ❑ Standard 3" product clearance

EXHAUST

- ❑ Concealed Integral Ducting
- ❑ Dual 10" External Exhaust Ports with Dampers
- ❑ Reclamation Exhaust System with Coalescing Screen for the lowest chemistry loss is the industry

SPECIFICATIONS

ELECTRICAL: 240, 380, 480 VAC 3PHZ

EXHAUST: 1200 CFM @ 1.5" SP **Per Stack** (2 stacks)

WATER INPUT: 4.5 – 7.5 GPM depending on options and configuration

PRODUCT CLEARANCE: 3.0"

WEIGHT: 3,700 lbs. Approx.

LENGTH: 180"

WIDTH: 74.6"

BELT HEIGHT: 35 -36" (adj.)

HEIGHT: 61 - 67" (adj.)



WARRANTY

Technical Devices Company warrants all component parts or subsystems for a period of **one year** from date of purchase against all defects in material and workmanship and will replace or repair any part found to be defective during the warranty period.

START-UP and TRAINING

1-2 days of training are provided by a factory-trained technician for a total cost of \$1500.00 (within North America). This price includes standard travel and expenses.

Please note: An advance notice of 2 weeks is required by the Technical Devices' Service Department for installations. Any shorter notice may require the customer to pay for additional airfare costs.

SERVICE

Normal service is provided from our factory in Torrance, CA.

PRICING

Our prices are firm for 30 days, F.O.B. factory, Torrance, California.

SHIPMENT

Shipment can be accomplished within **8-10 weeks** after receipt of purchase order and down payment.

Padded, air-ride van is required. Shipments are freight collect.

TERMS

40% down payment with the purchase order, 40% Prior to shipment, balance net 30 days after shipment upon approval of credit.

Transportation: FOB Plant (Torrance, CA); shipped air- ride van, collect.

SK 5265
SK 5266