



**Nu/Clean 224 XL Touch Screen**  
Inline Aqueous Cleaner  
*Technical Specifications & Pricing*



Since 1952, Technical Devices has been supplying the electronics industry with the highest quality production equipment, and has an enviable reputation for after-market service and product support. In addition Technical Devices continues to be on the cutting edge of cleaning technology with innovative products and features that produce excellent, reliable cleaning results while making a minimal impact on the environment. The Nu/CLEAN line of Aqueous cleaners are the safest, quietest, and most energy efficient machines on the market today. Technical Devices is also the first company to offer a Hybrid option for all of its cleaners. The Hybrid Nu/CLEAN reduces your energy costs significantly by using natural gas instead of electricity to heat the water in the cleaner.

Even with all of these technological and environmental advances, the Nu/CLEAN aqueous cleaners are easy to operate and maintain. The touch screen control system is intuitive and straightforward while being robust enough to control and monitor all critical functions of the cleaner. The alarms and maintenance screens let the operator know immediately what actions need to be taken. The physical design of the tanks, cabinets, and controls make regular maintenance quick and easy.

With decades of cleaning experience and an established network of customer service personnel, Technical Devices Company is the best choice to meet your cleaning needs.



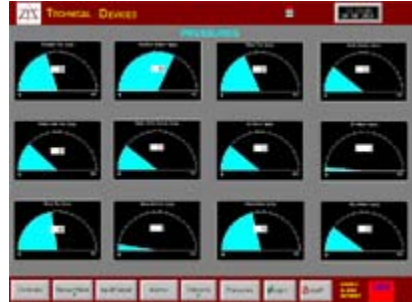
## **TOUCH SCREEN CONTROL SYSTEM**



*Main Screen*



*Input / Output Screen*



*Pressures Screen*

- Robust, Windows based platform
- Password controlled access to programming screens
- Easy operator interface
- Alarm Package included in software
- Touch screen displays and sounds alarms when machine controls are out of tolerance
- Light Tower
- Auto Start / Stop with photo sensor at entrance
- 12" LCD Touch screen

## **STANDARD FEATURES in order of MODULE CONFIGURATION**

### **LOAD**

- Emergency Stop Button
- Personnel Grounding Socket
- 6" or 12" Fixed Entrance Extension (Specify at time of order placement)

### **PREWASH STAGE (12" length)**

- One Spray Module with two Quick Disconnect Spray Bars (24 nozzles) *[See Figure 1]*
- Isolated Prewash with outside water supply controlled and monitored by valve and flow meter with direct flow to drain

### **OR**

- Prewash with water supplied from wash module pump with direct flow to drain
- Independent spray pressure control for upper and lower spray bars
- Rear pressure gauges next to spray control valves for upper and lower spray bars
- Easy access catch screen *[See Figure 2]*
- Transparent interior slide panel lid and exterior access tempered glass window for in process inspection
- Removable access ports for tank cleaning



### ANTI-DRAGOUT AIR KNIFE STAGE ( 8" length)

- ❑ One Upper and One Lower Air Knife
- ❑ Reduces Liquid Dragout from Prewash to Wash tank
- ❑ Tempered glass window for In-process Inspection

### WASH STAGE (36" length)

- ❑ 3 Incoloy 10 kW Immersion Heaters mounted on accessible front bulkhead *[See Fig. 2]*
- ❑ Over Temperature Protection
- ❑ Redundant low liquid level protection
- ❑ 3 Spray Modules totaling 12 Quick Disconnect Spray Bars (144 nozzles) *[See Figure 1]*
- ❑ Independent Gate Valves Spray Pressure Control for upper and lower spray bars
- ❑ Rear pressure gauges next to spray control valves for upper and lower spray bars
- ❑ High Performance 7.5 H.P. Centrifugal Stainless Steel Pump
- ❑ Stainless Steel High Pressure Plumbing
- ❑ Removable Low Loss Pump Intake Screen Strainer (60 Mesh - .01")
- ❑ Easy Access Catch Screen *[See Figure 2]*
- ❑ Removable Access Ports for Tank cleaning
- ❑ Transparent interior slide panel lid and exterior access tempered glass window for in-process inspection
- ❑ Independent Tank Drain Valve

*Figure 1*



**Quick Disconnect  
Spray Bars**

*Figure 2*



**Easily Accessible  
Immersion Heaters  
and Catch Screens**  
*(Shown with Front Panel  
Removed)*



### **DRY ISOLATION STAGE (36" Length)**

- ❑ One Upper and One Lower Drag Out Air Knife with Adjustable Rotation
- ❑ Allows for soak time on product
- ❑ Prevents Wash from contaminating Rinse Section
- ❑ Isolates product during the transition from wash to rinse
- ❑ Allows a wet isolation rinse stage to be retrofitted if application changes

### **RINSE STAGE**

- ❑ 3 Incoloy 10 kW Immersion Heaters mounted on accessible front bulkhead *[See Fig.2]*
- ❑ Over temperature Protection
- ❑ Redundant low liquid level protection
- ❑ Automatic Fill with Level Control
- ❑ Easy Access Catch Screen *[See Figure 2]*
- ❑ Removable Access Ports for Tank Cleaning
- ❑ Transparent Interior slide panel lid and exterior access tempered glass window for in process inspection
- ❑ Independent Tank Drain Valve
- ❑ Overflows to Wash

### **FINAL RINSE STAGE (11" Length)**

- ❑ 1 Spray Module with 2 Quick Disconnect Spray Bars (20 nozzles) *[See Figure 1]*
- ❑ Water pressure determined by incoming water supply
- ❑ Nozzle Spray is controlled and monitored by valve and flow meter
- ❑ Removable Access Ports for Tank Cleaning
- ❑ Transparent Interior slide panel lid and exterior access tempered glass window for in-process inspection
- ❑ Easy access catch screen *[See Figure 2]*
- ❑ Drag Out Air Knife Removes and Flushes Rinse Water

### **DRYER STAGE (41" Length)**

- ❑ 1 Air Knife Module with 2 Upper and 1 Lower Air Knives
- ❑ 1 each High Performance 15 HP Turbine Air Blower with Self Tensioning Belt
- ❑ Magnehelic Pressure Gauge for blower
- ❑ Slide out Blower for easier access *[See Figure 3]*
- ❑ Exterior Tempered Glass Window for In-process Inspection
- ❑ Insulated Blower and Air Knife compartments for lower decibel operation
- ❑ Custom Designed Stripping Air Knives for High Efficiency drying *[See Figure 4]*
- ❑ Height & Angle Adjustable Upper Air Knives
- ❑ Angle Adjustable Lower Air Knives
- ❑ Double Paned Glass Viewing Windows for Noise Reduction
- ❑ Reusable polypro Air Knife Filter
- ❑ Dryer Section utilizes non-recirculating air to reduce humidity in drying chamber

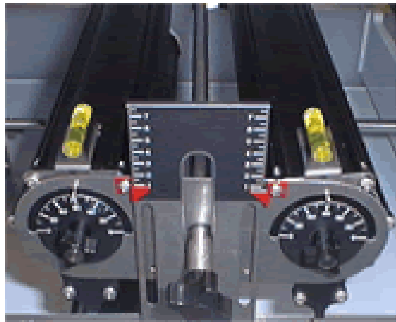


Figure 3



Our **Roll Out Blowers** make changing filters and other maintenance procedures much faster and easier  
( shown with 1 standard and 1 optional blower)

Figure 4



High efficiency, height and angle adjustable  
**Air Knives**  
for optimum drying

## UNLOAD

- ❑ Emergency Stop Button
- ❑ Insulated Silencing Shroud
- ❑ Personnel Grounding Strap Socket
- ❑ Stainless Steel Exit Ramp
- ❑ Fixed 6" or 12" Exit Extension (Specify at time of order placement)



## CONVEYOR

- ❑ Full 24" Process Width
- ❑ Conveyor rail cutouts at spray bar and air knife locations
- ❑ Stainless Steel (302), .5 pitch/ .072-inch diameter wire belt (standard)
- ❑ Upper Stainless Steel (302), .375 pitch/ .072-inch diameter wire belt (optional)
- ❑ Drive protected by Slip Clutch
- ❑ Conveyor is grounded for ESD Protection
- ❑ Return Conveyor Belt routed outside of rinse and wash modules
- ❑ Uni-Drive Top & Bottom Belts (Single Drive Motor)
- ❑ Standard 3" product clearance

## EXHAUST

- ❑ Concealed Integral Ducting
- ❑ Dual 10" External Exhaust Ports with Dampers
- ❑ Reclamation Exhaust System with Coalescing Screen for the lowest chemistry loss in the industry

## SPECIFICATIONS

**ELECTRICAL:** 240, 380, 480 VAC 3PHZ

**EXHAUST:** 1200 CFM @ 1.5" SP **Per Stack** ( 2 stacks)

**WATER INPUT:** 4.5 – 7.5 GPM depending on options and configuration

**PRODUCT CLEARANCE:** 3.0"

**WEIGHT:** 3,500 lbs. Approx.

**LENGTH:** 180"

**WIDTH:** 74.6"

**BELT HEIGHT:** 35 -36" (adj.)

**HEIGHT:** 66 - 67" (adj.)



## WARRANTY

Technical Devices Company warrants all component parts or subsystems for a period of **one year** from date of purchase against all defects in material and workmanship and will replace or repair any part found to be defective during the warranty period.

## START-UP and TRAINING

1-2 days of training are provided by a factory-trained technician for a total cost of \$1500.00. (within North America). This price includes standard travel and expenses.

**Please note:** An advance notice of 2 weeks is required by the Technical Devices' Service Department for installations. Any shorter notice may require the customer to pay for additional airfare costs.

## SERVICE

Normal service is provided from our factory in Torrance, CA.

## PRICING

Our prices are firm for 30 days, F.O.B. factory, Torrance, California.

## SHIPMENT

Shipment can be accomplished within **8-10 weeks** after receipt of purchase order and down payment.

Padded, air-ride van is required. Shipments are freight collect.

## TERMS

40% down payment with the purchase order, 40% Prior to shipment, balance net 30 days after shipment upon approval of credit.

Transportation: FOB Plant (Torrance, CA); shipped air-ride van, collect.

SK 5371  
SK 5373